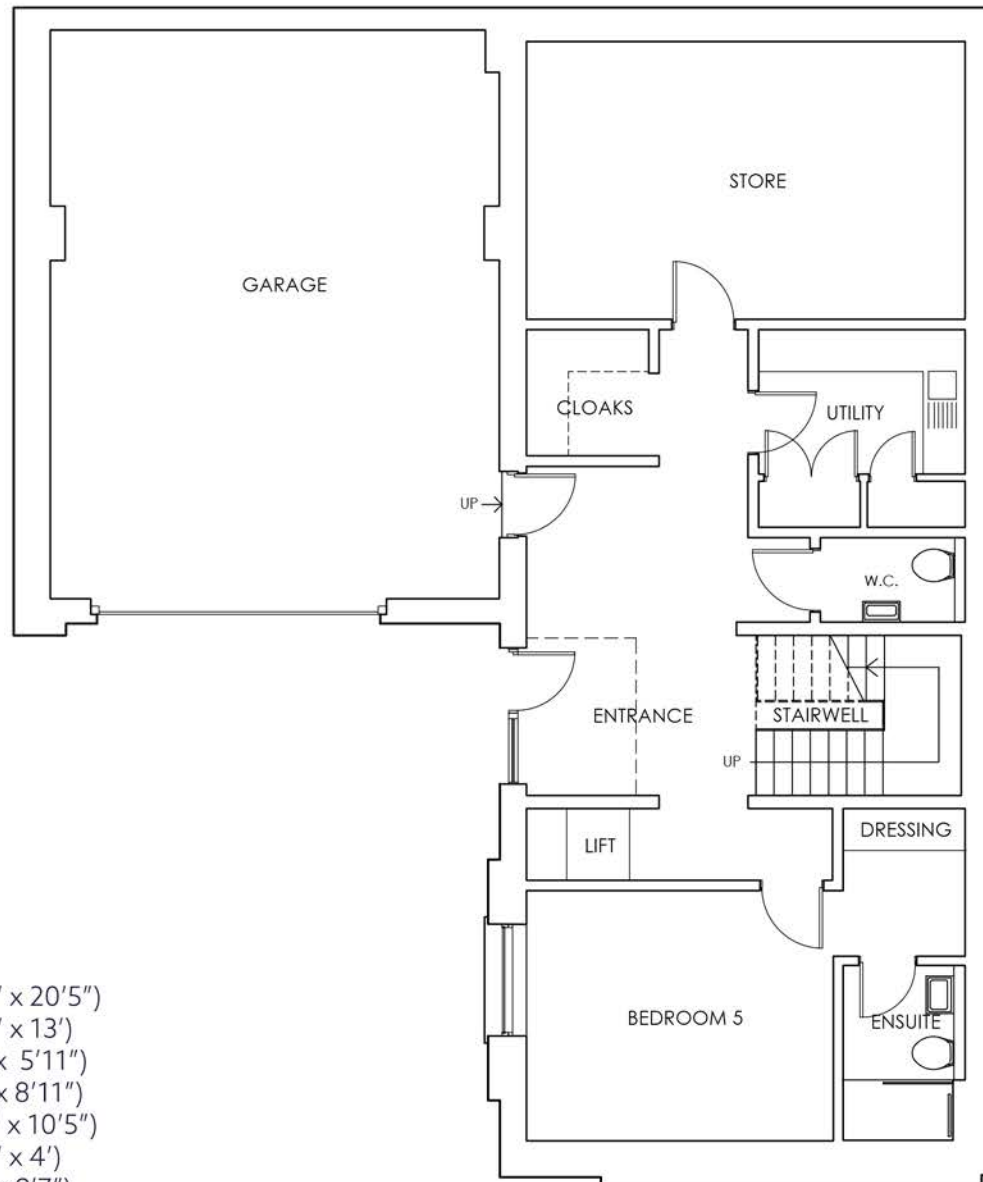


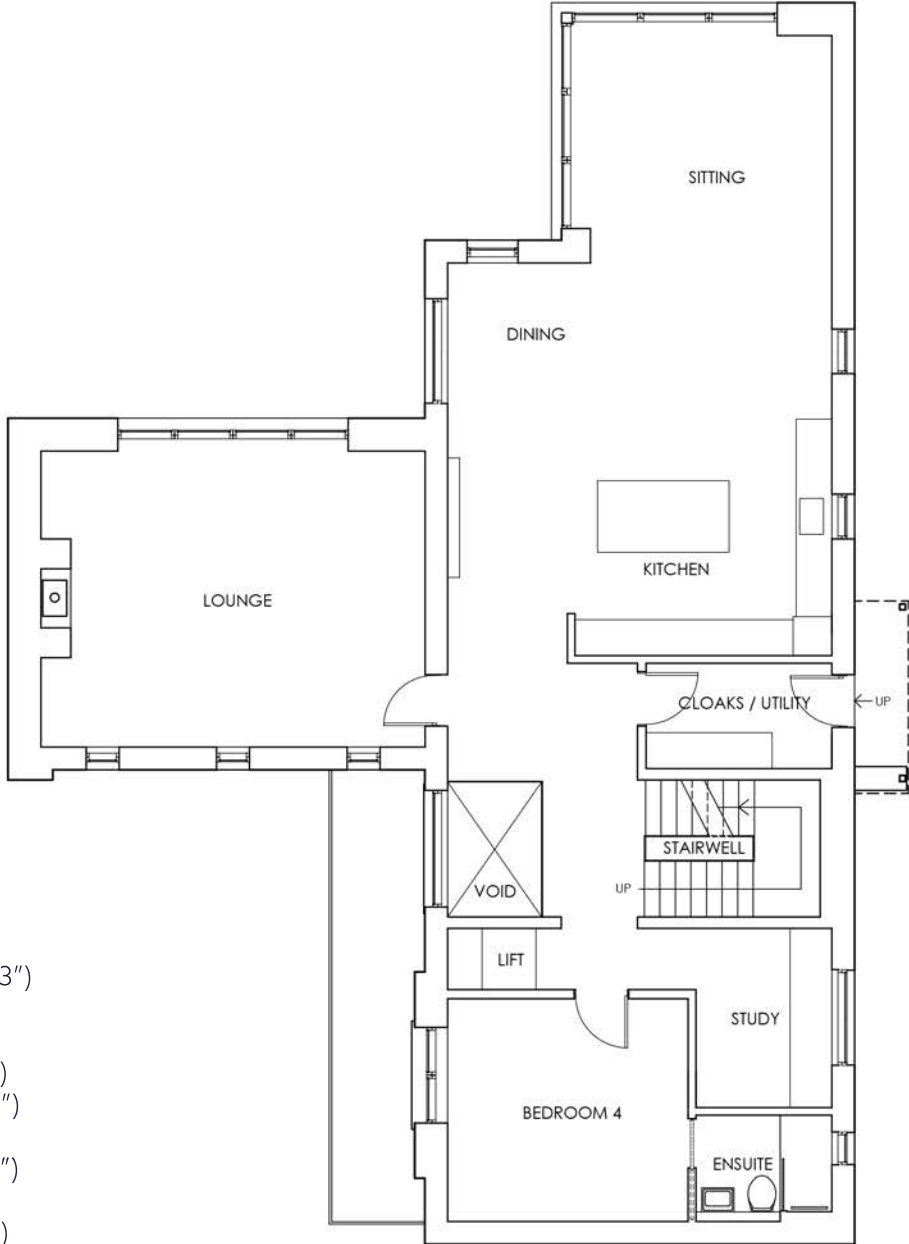
Lower Ground Floor



Garage	(26'9" x 20'5")
Store	(20'7" x 13')
Cloaks	(5'9" x 5'11")
Utility	(9'9" x 8'11")
Entrance	(15'6" x 10'5")
WC	(6'10" x 4')
Lift Lobby	(3'4" x 9'7")
Bedroom 5	(11'9" x 14'5")
Bedroom 5 en suite	(8'3" x 5'2")
Dressing	(6'11" x 5'9")



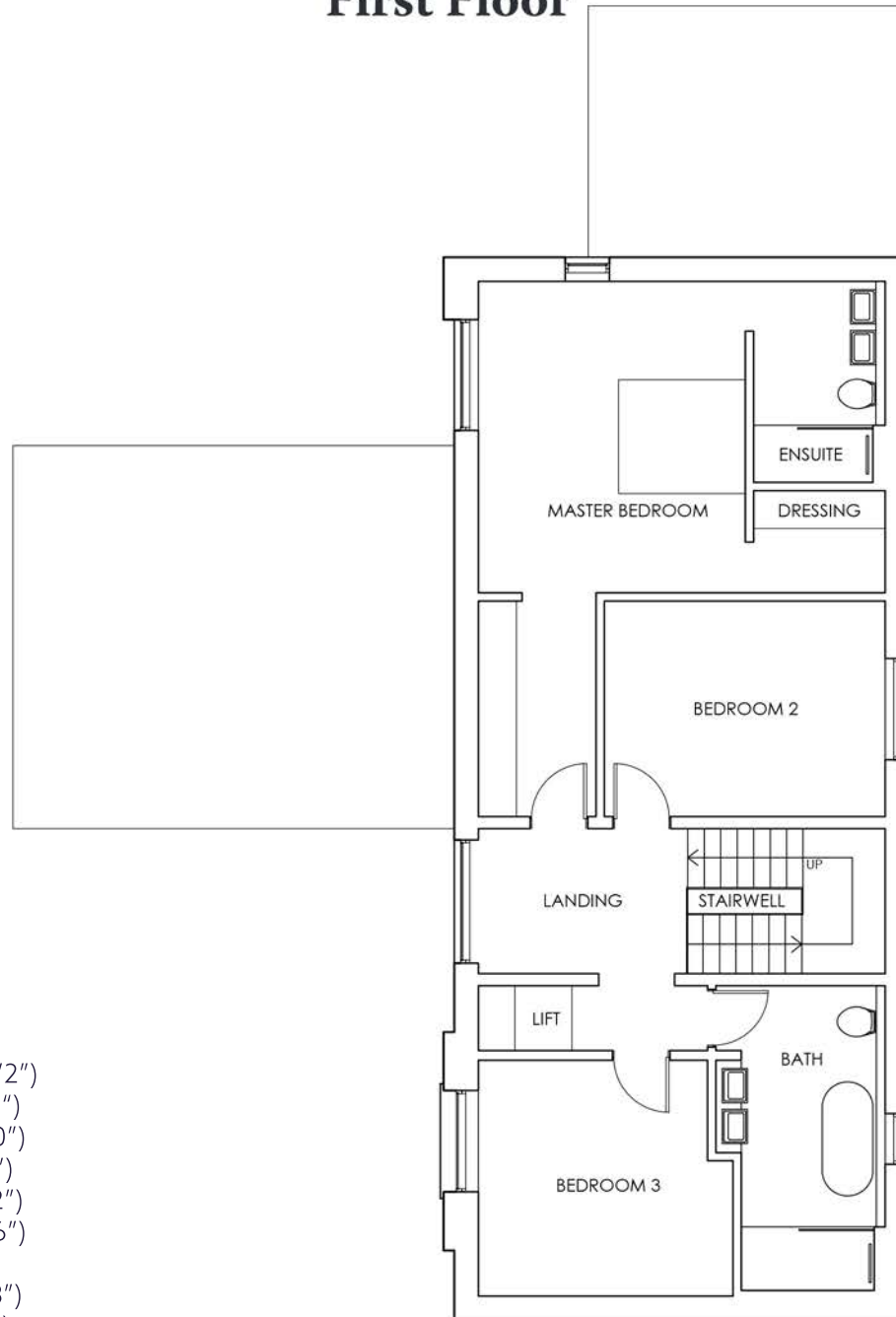
Ground Floor



- Lounge (21'11" x 16'3")
- Kitchen / Diner (21'1" x 22')
- Sitting (14' x 12'6")
- Cloaks / Utility (10'2" x 5'9")
- Landing (inc. Gallery void) (10'5" x 13'3")
- Lift Lobby (3'4" x 5'7")
- Bedroom 4 (13'2" x 12'5")
- Bedroom 4 en suite (5'3" x 7'6")
- Study (7'6" x 9'10")
- Summer House (8'6" x 27')



First Floor



- Master Bedroom (13'10" x 16'2")
- Master Bedroom lobby (6'11" x 11'2")
- En suite (10'5" x 6'10")
- Dressing (5'4" x 6'10")
- Bedroom 2 (14'7" x 11'2")
- Landing (10'10" x 7'6")
- Lift Lobby (3'4" x 7')
- Bedroom 3 (13'2" x 12'3")
- Main Bathroom (15'9" x 7'6")

